

PCIe to SATA RAID Subsystem

-- The RAID makes business continuity realized.

PRODUCT HIGHLIGHT

- x4 PCIe host interface.
- Support up to 8 SATA II driver.
- No operating downtime and easy maintenance with:
 - Redundant, hot-swappable components
 - Modular architecture design
- User Friendly, Java based RAID management interface.
- Event notification through e-mail.



SA-4378S

Arena launches the latest RAID System, SA-4378, for SMB to storage market demands. Latest SATA II disk interface and upgraded CPU speed up data operation rate. The high scalable, high performance, and high reliability features make it the ideal choice for high data available storage demands.

FEATURES AND BENEFITS

Extreme Performance

x4 PCI-e provided 1Gb/s host-transferring bandwidth with upgraded Intel IOP333 CPU which delivers high performance for heavy duty storage applications.

User-friendly Management

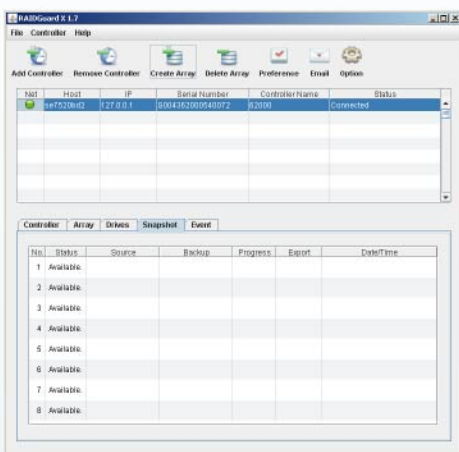
Front Panel LCD, Buttons, and web browser-based GUI make RAID functions set up and managed in an easier way.

Seamless Compatibility

Java-based management interface make SA-4378S friendly and easy to use.

Fast backup and restore

Snapshot support fast data backup and restore, and up to 8 concurrent snapshot per source volume.



Technical Specifications



Host Channel	
Model No.	SA-4378S
Host Interface	x4 PCI-Express
Data Transfer Rate	Up to 1Gb/s
Host Channel No.	1
Hardware	
Controller CPU	Intel IOP333
Cache Memory	256-2048MB DDR RAM
Disk Interface	SATA II
Disk Channel No.	8
Hot Swap Disk Tray	8 x 3.5" swappable trays
Hot Swap Power Supply	300W x2 Redundant
AC Input Voltage	100 to 240V (+/-10%), 47 to 63 Hz
Battery Backup	Yes (optional)
Hot Swap Fan Module	2
RAID Functions	
RAID Levels	JBOD, 0, 1, 0+1, 5, 6
Data Rebuild	Automatic data regeneration
RAID Features	Up to 4 independent RAID groups RAID capacity partitioning: up to 16 slices Support up to 64 LUNs Selective initialization method with on-the-fly background initialization Online RAID group expansion Online RAID level migration Automatic drive insertion/removal detection and fast disk rebuilding Online bad block data recovery and reallocation Online disk scrubbing with data refresh and parity regeneration Disk health monitoring by S.M.A.R.T. Array roaming and drive traveling with redundant on-disk meta data Dual firmware images for firmware recovery Support boot from RAID
Online Expansion	Yes
RAID Management	
Front Panel LCD and Buttons	Easy access for configuration and status report
RS-232 Terminal	User friendly interface for configuration and status report
Management AP	Java browser-based management GUI for configuration and status monitoring
Event Notification	LCD indicator, Built-in buzzer, e-mail
Environment Specification	
Humidity	20% to 80% non-condensing
Operating Temperature	5°C to 40°C 41°F to 104°F
Non-operating Temperature	-25°C to 60°C -13°F to 140°F
Safety Regulatory	UL, CUL, CB
EMC Standard	FCC, CE, C-Tick, BSMI
Dimension and Weight	
Physical Dimension	485(W) x 470(D) x 88(H) mm
Physical Weight (without drives)	16 Kgs
Packed Dimension	610(W) x 800(D) x 280(H) mm
Packed Weight (without drives)	23 Kgs

* Specifications and product offerings may vary without notice.

* Various trademarks belong to their respective owners.

SA-4378S-081 | 160205

Headquarters

MaxTronic International Co., Ltd.
TEL : 886-2-2218 4875
FAX : 886-2-2218 4896
<http://www.maxtronic.com.tw>

America

Arena-MaxTronic Inc.
TEL : 1-626-334 1888
FAX : 1-626-334 6888
<http://www.maxtronic.com>

China

欧骉股份有限公司 北京代表处
TEL : 86-10-8280 0080
FAX : 86-10-8280 0784
<http://www.maxtronic.com.cn>