

-- The RAID makes business continuity realized.

## PRODUCT HIGHLIGHTS

- Optimized for 2K/4K HD Format Video processing
- Performance Dual 2.5Gb x4 PCI-e provided 2GBps host-transferring
- RAID levels 0, 1, 5, 6, 0+1, and JBOD
- Snapshot for fast backup and restore
- Online disk scrubbing and S.M.A.R.T monitoring
- Java-based GUI for remote management
- Windows Server 2008 32/64-bit WHQL certified
- RoHS complaint system



**SA-8808D**

ExaRAID HD storage system is built upon an innovative and useful architecture to provide great flexibility with unrivaled speed. The system also takes the full advantage of the high performance and low cost PCI-e and SATA technology, which makes it the most affordable and cost-effective PCI-e RAID storage in the market. The dual independent RAID controller technology is provided to improve the security of the data stored inside the system and the performance when running throughout intensive applications.

## FEATURES AND BENEFITS

### Extreme Performance

Dual 2.5Gb x4 PCI-e provided over 1.5GBps host-transferring bandwidth with upgraded Intel CPU which delivers high performance for heavy duty storage applications.

### User-friendly Management

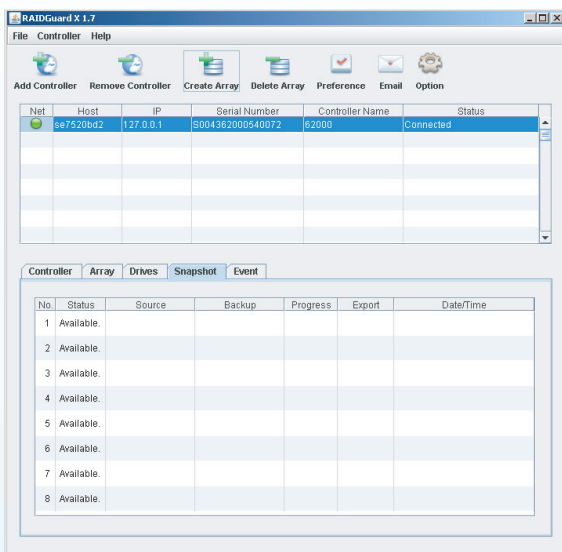
Front Panel LCD, Buttons, and Java-based GUI make RAID functions set up and managed in an easier way.

### Unique disk lag proof technology

Guarantee the respond time for several disk while they are with inconsistent disk read speed.

### Remarkable equalization mode (EQ mode) adjustment

EQ mode is able to improve the video quality especially when it comes for HD or 2K/4K video editing appliance.



# Technical Specifications



<b>Host Channel</b>	
Model No.	SA-8808D
Host Interface	2.5Gb x4 PCI-Express
Data Transfer Rate	Up to 2GBps
Host Channel No.	2, (1 of per controller)
<b>Hardware</b>	
Controller CPU	Intel IOP341
Cache Memory	512~2048 MB DDR II
Disk Interface	SATA II
Disk Channel No.	24
Hot Swap Disk Tray	24 x 3.5" swappable trays
Hot Swap Power Supply	350W, Redundant 2+1
AC Input Voltage	100 to 240V (+/-10%), 47 to 63 Hz
Battery Backup	Yes (optional)
Hot Swap Fan Module	4
<b>RAID Functions</b>	
RAID Levels	JBOD, 0, 1, 0+1, 5, 6
Data Rebuild	Automatic data regeneration
RAID Features	<ul style="list-style-type: none"><li>-Up to 4 independent disk arrays</li><li>-RAID capacity partitioning: up to 16 slices</li><li>-Supports up to 64 LUNs</li><li>-Variable stripe sizes, up to 256KB</li><li>-Selective initialization method with on-the-fly background initialization and performance evaluation</li><li>-Supports over-2TB volumes</li><li>-Online RAID group expansion and level migration</li><li>-On-the-fly RAID initialization</li><li>-Snapshot for fast backup and restore</li><li>-Supports write-back and write-through caching</li><li>-Selective and adaptive read/write optimization policies</li><li>-Fast read response by intelligently bypass slow drive</li><li>-Automatic drive insertion/removal detection and fast disk rebuilding</li><li>-Online bad block data recovery and reallocation</li><li>-Online disk scrubbing with data refresh and parity regeneration</li><li>-Disk health monitoring by S.M.A.R.T.</li><li>-NVRAM-based transaction log and auto parity resynchronization</li><li>-Array roaming and drive traveling with redundant on-disk meta data</li><li>-Array recovery to restore RAID configurations</li><li>-Dual firmware images for firmware recovery</li><li>-Supports boot from RAID</li><li>-Enclosure components monitoring and control</li><li>-Optimized for multiple-stream video processing</li><li>-Java-based GUI for remote management</li><li>-Reliable multi-lane SATA connectors</li></ul>
<b>RAID Management</b>	
Front Panel LCD and Buttons	Easy access for configuration and status report
RS-232 Terminal	Connects to maintenance equipment
Management AP	Java-based management GUI for configuration and status monitoring
Event Notification	LCD indicator, Built-in buzzer, e-mail
<b>Environment Specification</b>	
Humidity	20% to 80% non-condensing
Operating Temperature	5 °C to 40 °C (41 °F to 104 °F)
Non-operating Temperature	-25 °C to 60 °C (-13 °F to 140 °F)
Safety Regulatory	UL, CUL, CB
EMC Standard	FCC, CE, C-Tick, BSMI
<b>Dimension and Weight</b>	
Physical Dimension	485(W) x 565(D) x 176(H) mm
Physical Weight (without drives)	34Kgs
Packed Dimension	635(W) x 805(D) x 565(H) mm
Packed Weight (without drives)	44 Kgs

\* Specifications and product offerings may vary without notice.

\* Various trademarks belong to their respective owners.

SA-8808D-0904280200

## Headquarters

MaxTronic International Co., Ltd.  
TEL : 886-2-2218 4875  
FAX : 886-2-2218 4896  
<http://www.maxtronic.com.tw>

## America

Arena-MaxTronic Inc.  
TEL : 1-626-334 1888  
FAX : 1-626-334 6888  
<http://www.maxtronic.com>

## China

欧骅股份有限公司 北京办事处  
TEL : 86-10-8280 0080  
FAX : 86-10-8280 0784  
<http://www.maxtronic.com.cn>